



LOCATX

REAL TIME LOCATING SYSTEMS

PERSONNEL SAFETY & SECURITY

Gain virtual real-time visibility of employees, contractors and authorized visitors within your mine, plant or commercial enterprise. Keep your critical resources safe. Monitor physical access to secured areas and exposure to hazardous materials. Meet security and safety reporting regulations.

LocatX provides efficient and cost effective tools to help you monitor high-value resources, assets and equipment throughout the enterprise. The system involves issuing to personnel an RFID tag that sends out a constant radio signal which is then picked up by a fixed receiver (reader) at any strategic location or zone. The software monitors and pinpoints the location on a graphical interface. Because each tag has a unique identity the data of the individual is accessible for emergency evacuation, roll call, locating, zone restrictions and historical data.

ID TAGS

- > Industrial packaging for harsh environments
- > Lightweight, water-proof
- > Active 24 x 7 long life tags
- > Can incorporate photo ID, access control and / or duress call
- > Long life, high impact resistant UV stabilised PVC construction, ultrasonically sealed
- > UHF transmission can be recorded at distances of up to 50 meters
- > Transmission unaffected by most materials in the surrounding environment



FEATURES

Global standard technology
Interface to existing systems
Graphical user interface
Real time / historical reporting
Alarms
Remote reporting via sms or email
On card data storage facility

USES & BENEFITS

Real time locating
Automated rollcall, shaft clear
Access control
Zone control
Identification
Duress call facility
Emergency evacuation

LocatX is enabled by RFID Technology

RFID TECHNOLOGY

Frequency 433.92 MHz
Bandwidth 700 kHz

READERS	
Fixed	
Read range	up to 50metres
Handheld	
Windows CE Operating System	

ID TAG	
Dual technology	Active 433.92 MHz
.....	Mifare 13.56 MHz
Format	Card
Printable	Photo / Data
Memory	4kb
Size	85 x 54 x 7mm
Packaging	IP68
Duress pushbutton with LED acknowledge function	



Handheld PDA



ID Tag



Fixed reader

SYSTEM

Client server based utilising power of Microsoft SQL server
Graphical user interface

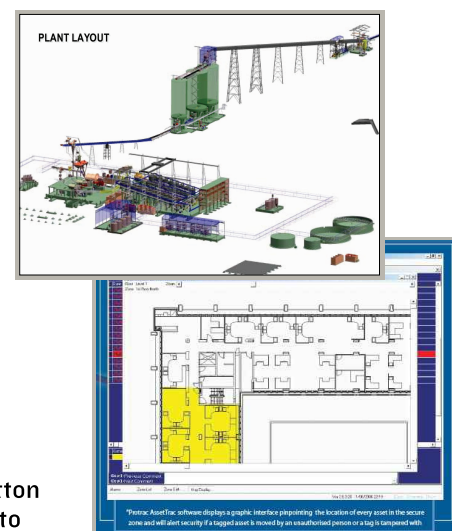
REPORTS	ALARMS
Tag / employee ID	Access violations of unauthorised entry
Date / time / location	Panic alarm
Rollcall at emergency evacuation point	Historical
Physical location	
Historical (routes followed)	
Visitors in zones	

LocateX 3 in 1 tag is a lightweight identity card, access control card and duress call button combined into one tag worn on a lanyard or belt clip. It is the size of a standard photo ID card and is made of high impact resistant, UV stabilized PVC. The unit is absolutely watertight and it is ultrasonically sealed for life.

The duress call button illuminates when pressed to reassure the user that the tag is "live".

The system is based on a network of readers or receivers that read any signals transmitted by a radio tag within their proximity and transmit identifying data to the central LocateX system. Portable handheld readers are used for remote identification and reading of tag data. The readers have a wireless interface to the system for data retrieval and transfer.

The LocateX software monitors and records "real time" ID/location/time data and displays a graphic Interface pinpointing every person and will alarm if an ID tag enters an unauthorized location. All events are recorded within the system historian.



Distributed by:

Endorsed by:

RFID Institute SA
Africa's Independent Advisory Centre
JOHANNESBURG • DURBAN • CAPE TOWN