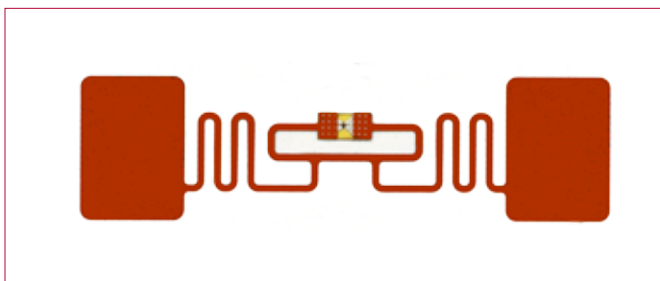




# ALN-9562 Squiggle-SH Inlay

The Alien Technology® ALN-9562 Squiggle-SH Inlays are general purpose RFID inlays optimized for use in pallet and case tagging applications.

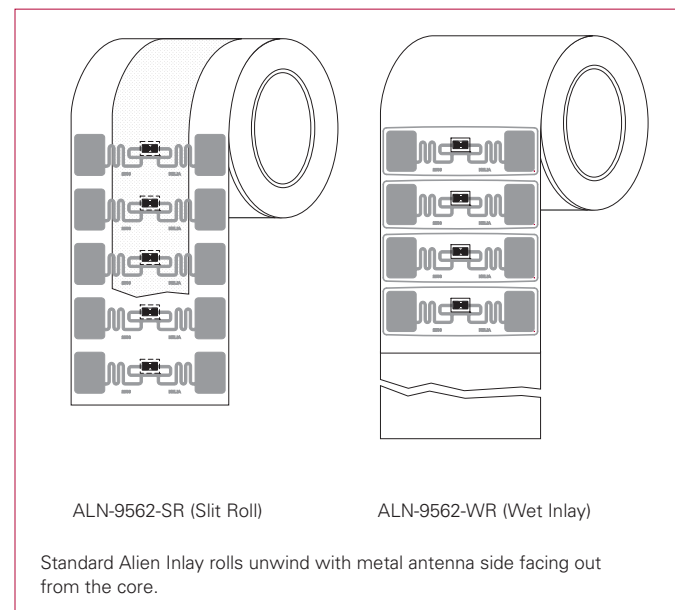


## Features

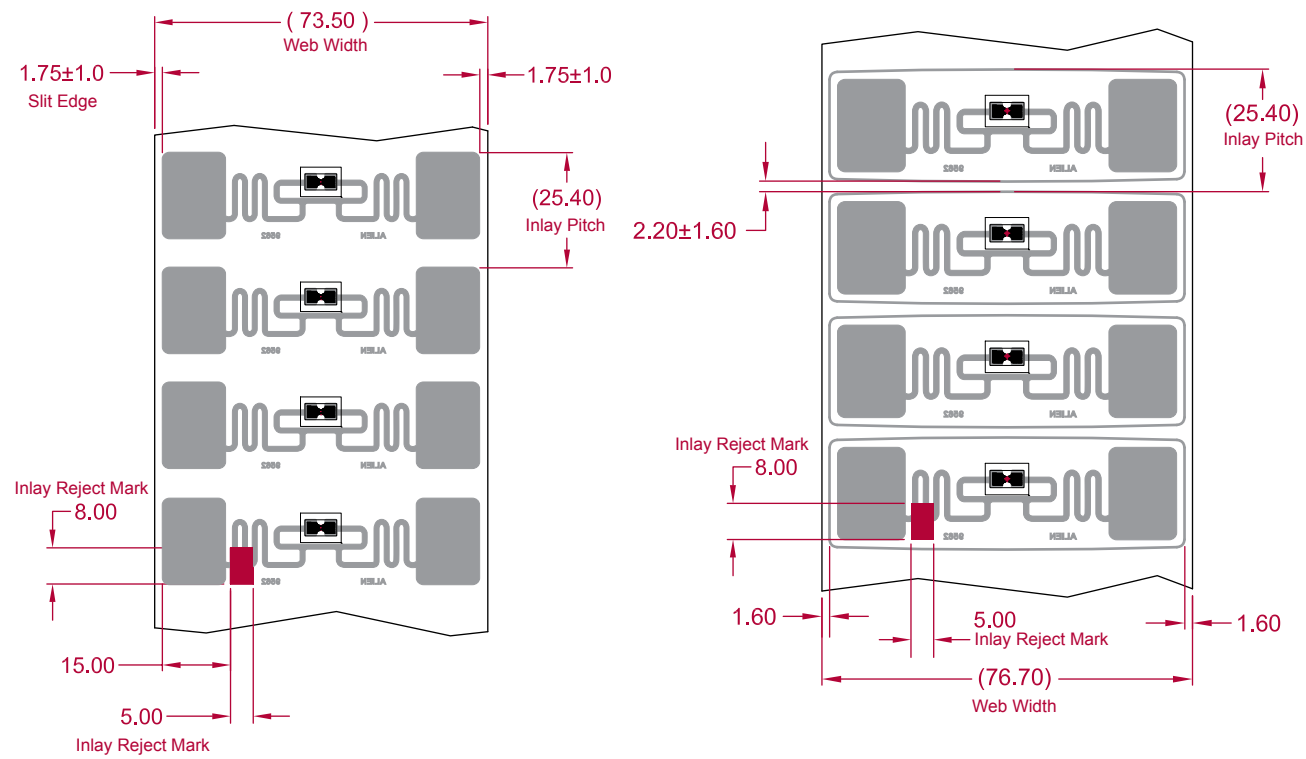
- › EPC Class 1 Gen 2 / ISO 18000-6C
- › Exceptional range
- › High-speed programming for seamless manufacturing integration
- › World Tag operates at global frequencies 860-960 MHz
- › Available in high-yield, high-capacity rolls for high-volume converting processes
- › Alien H2 IC with unique 32 bit TID, 32 bit access password, and optional user memory

Based on Alien®'s top performing Higgs UHF RFID Tag IC and a new compact Squiggle antenna design, the ALN-9562 delivers industry leading EPC Gen 2 range and reliability in a smaller form factor at competitive prices. ALN-9562 inlays are also World Tag compliant, enabling tags that operate consistently across certain RFID frequencies of the Americas, Europe, Middle East, Asia, and Africa

The Squiggle-SH (ALN-9562) is the newest member of Alien's family of Higgs powered UHF RFID inlays. Other members include: the Squiggle (ALN-9540) inlay, the best general purpose inlay available today; the 2 x 2 (ALN-9534), an omni-directional inlay for baggage and apparel; the M (ALN-9554) for high performance on plastics; and the Square-SQ (ALN-9529) for small item tags. All members of the family are manufactured using Alien's patented Fluidic Self Assembly (FSA®) process, which delivers high inlay volumes at low unit costs.



ALN-9562 Inlay Roll Dimensions

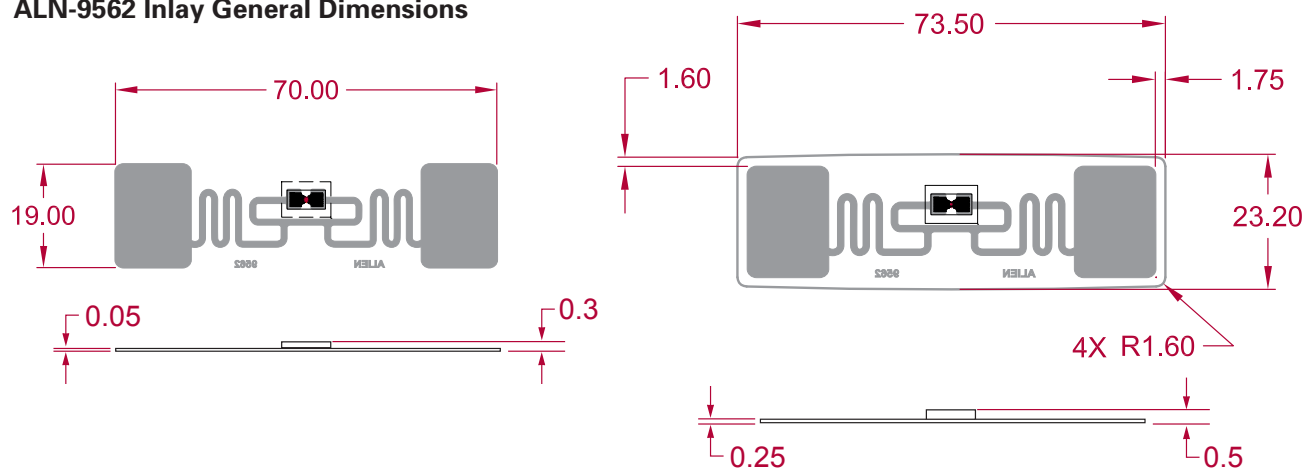


ALN-9562-SR (Slit Roll)

ALN-9562-WR (Wet Inlay)

All Dimensions in mm

ALN-9562 Inlay General Dimensions

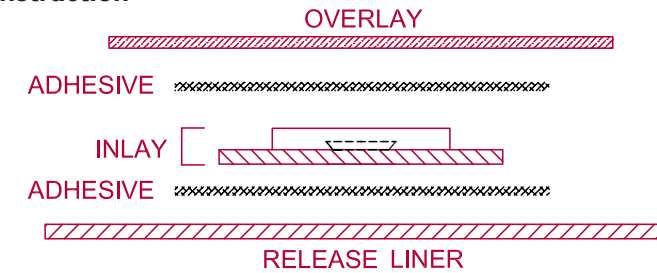


ALN-9562-SR (Slit Roll)

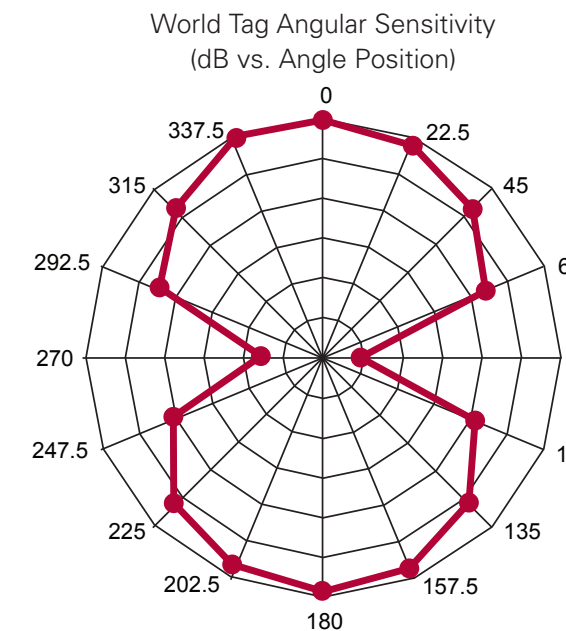
ALN-9562-WR (Wet Inlay)

All Dimensions in mm

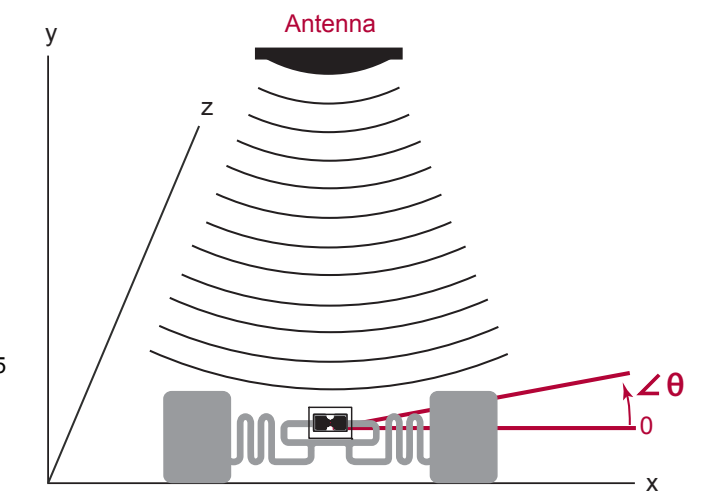
ALN-9562 Wet Inlay Construction



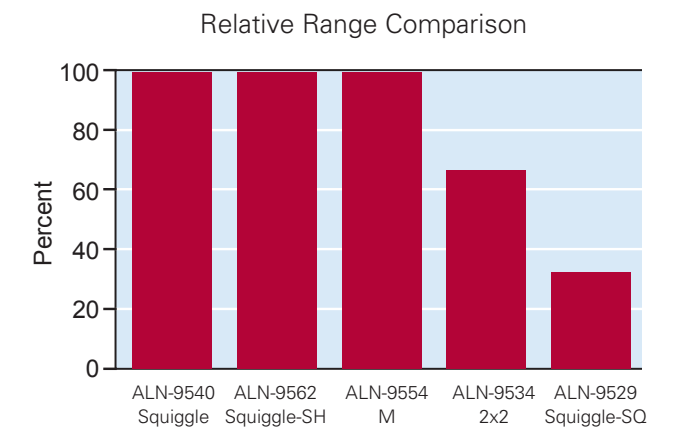
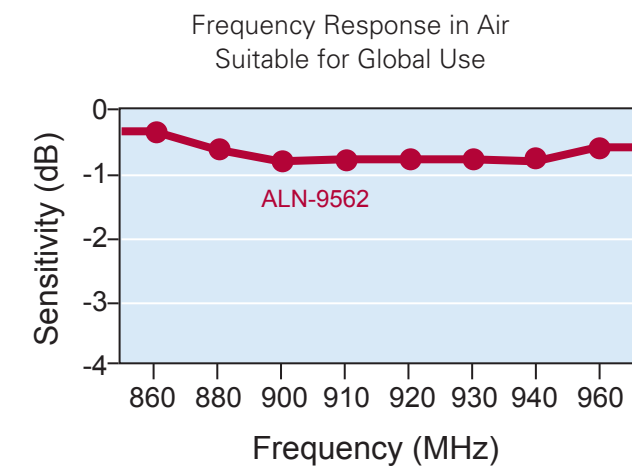
ALN-9562 Inlay Sensitivity & Orientation



World Tag Relative Orientation  
Inlay is rotated in the x, y, plane about the z axis



On-Product Performance Information





## ALN-9562 Squiggle-SH Inlay

### ALN-9562 Specifications

#### Dry Inlay Specifications

Core Length	76.2mm
Core ID	152.4mm
Core OD	158.75mm
Core Material	Chipboard
Interleaf Material	Parchment
Interleaf Width	38.1 ± 1.5mm
Inlays Per Roll	15,000 ± 10%
Roll Labeling Data	Roll Number, Quantity

#### Wet Inlay Roll Finishing

Core Length	79.4mm
Core ID	152.4mm
Core OD	158.75mm
Core Material	Chipboard
Leader Length	1828 ± 182mm
Leader Width	76.7 ± 3mm
Inlays Per Roll	15,000 ± 10%
Roll Labeling Data	Roll Number, Quantity
Overlay	1 mil white PET
Adhesive	Acrylic Emulsion
Release Liner	40# SCK

#### Environmental Specifications

Shelf Life	2 Years
Recommended Storage Conditions	-25°C to +50°C 20% to 90% RH Non-condensing
Drop Resistance	Per ASTM D5276
RoHs	2002/95/EC Compliant

#### RF Protocol

ISO/IEC 18000-6C	
EPC Class 1 Gen 2	
EPC Memory Size	96 Bits
Access Control	32 Bits
Kill Code	32 Bits
Programming Cycles	10,000 Write Cycles

#### Product Specifications

Worldwide Operating Frequencies	860–960 MHz (US, Europe, Asia, & Japan)
Minimum Inlay Antenna Size	19.0 x 70.0mm

#### ESD & Inlay Handling

Human Body Model	1.5 kV minimum
Charged Device Mode	1.5 kV minimum

Note: Inlays are sensitive to ESD. Observe standard practices to keep environmental static charge to a minimum.

